



G3 Extra Plus

Abrasive Compound



Product Description

G3 Extra Plus Abrasive Compound is a high quality, step 1 product for the removal of P1500 or finer sanding marks from all modern paint systems.

For best results, compound at 900 - 1300rpm using either a G Mop Yellow Compounding Foam or the more expensive, but higher performing, G Mop High Cut Foam.

Follow with G3 Fine Finishing Compound and a G Mop Finishing Foam to remove any swirls and holograms that might remain, to leave a heightened gloss finish.

Product Information

Size	Code	Ctn Qty
500g	G3E524	12
1kg	G3E124	6

Key Benefits

• Powerful Cut	Excellent cutting action, even on harder paints
• Good Gloss	Will remove P1500 or finer sanding marks leaving an excellent gloss finish
• Permanent Scratch Removal	Contains no fillers or silicones so scratch marks will not reappear
• Clean	Minimal throw-off
• Easy Off	Wipes off easily with a microfibre cloth



Use With

Machine Application:

Can be used with any of the applicators below. Best performance with a G Mop High Cut Foam



G Mop High Cut Foam
GMC618 (6" foam)
GMC818 (8" foam)



G Mop Yellow
Compounding Foam
GMC312 (3" foam)
GMC612 (6" foam)
GMC812 (8" foam)



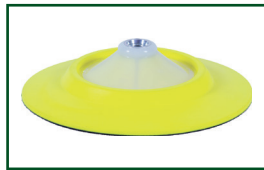
G Mop 8" Twisted
Wool Pad
GMW801
(Single Sided)
GMW806
(Double Sided)



G Mop Lambs
Wool Pad
GML301 (3" foam)
GML601 (6" foam)
GML801 (8" foam)



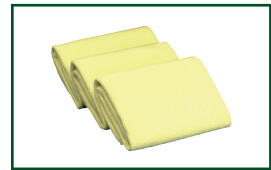
G Mop Back Plate with
Yellow Interface for
6" Pads
GMB614 (14mm)
GMB658 (5/8")
GMB616 (16mm)



G Mop Flexible Back
Plate for 8" Pads
GMB814 (14mm)
GMB858 (5/8")
GMB816 (16mm)

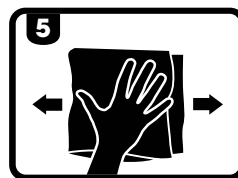
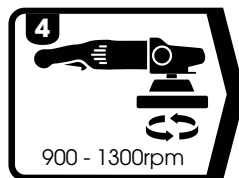
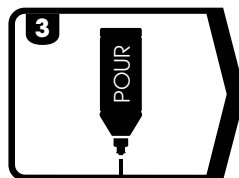
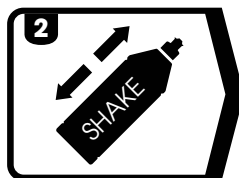
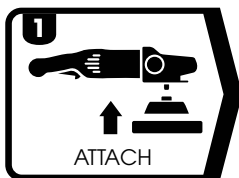


Adaptor for G Mop 8"
Double Sided Wool Pad
GMA014 (14mm thread)
GMA058 (5/8" thread)
GMA016 (16mm thread)



Farécla Finishing Cloth
FC-3 (3 x cloths)

How To Use



Technical Information

Appearance: **White coloured liquid**
Viscosity: **Highly viscous**
VOC Content: **109.6 g/L**
Relative Density: **1.37**
pH: **8 - 9**
Paint Type Compliance: **All paint types**

Tip

Prior to first use of a new pad, roughen the surface with a Spurring Brush to ensure optimum results. Clean pad with the Spurring Brush after use.



Spurring Brush
1090005